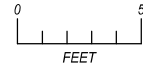
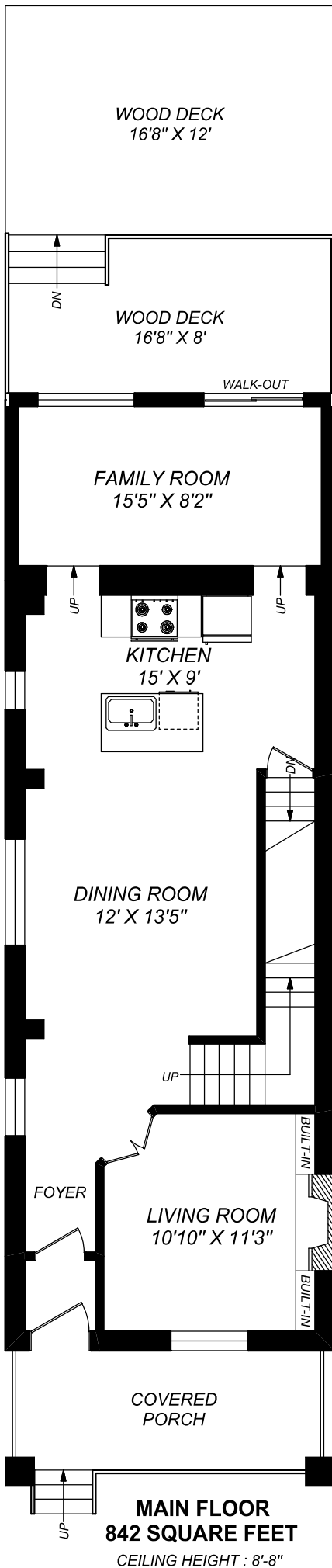
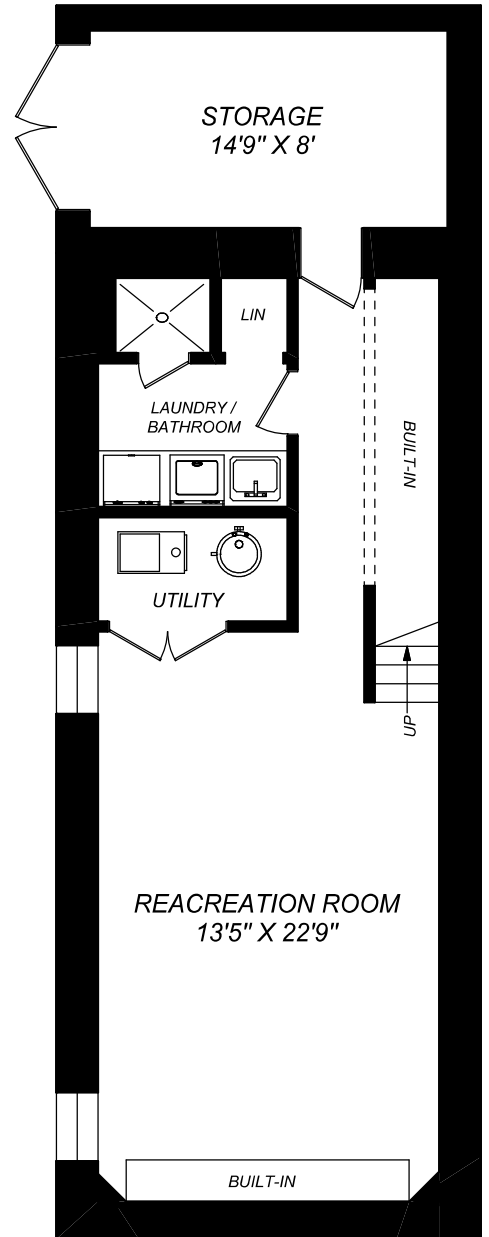
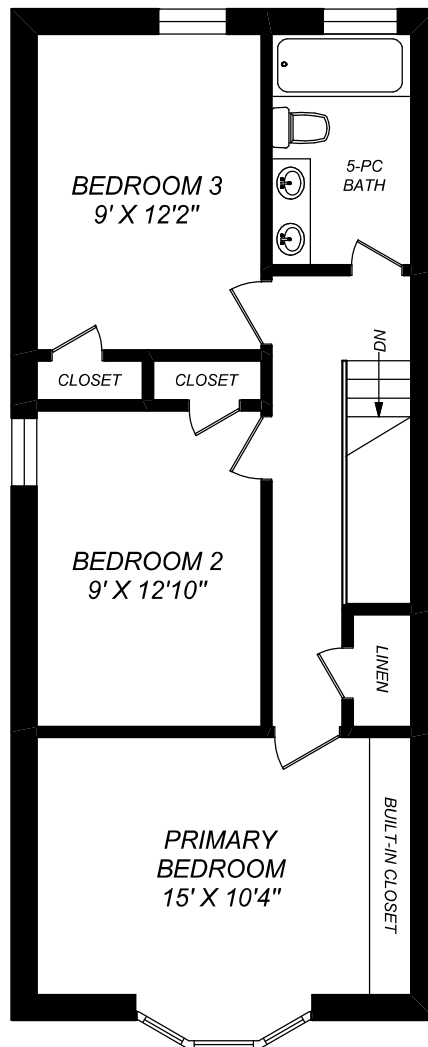


2 BLOOMFIELD AVENUE



truPlan
416 573 2096
E & O.E.

Floor plan may not be 100% accurate.





2 Bloomfield Ave

Toronto, ON

HOODQ ADDRESS REPORT™

Chestnut Park Real Estate
Limited, Brokerage
416.925.9191
chestnutpark.com



SCHOOLS

With excellent assigned and local public schools very close to this home, your kids will get a great education in the neighbourhood.



Riverdale Collegiate Institute

Designated Catchment School
Grades 9 to 12
1094 Gerrard St E

Roden Public School

Designated Catchment School
Grades PK to 8
151 Hiawatha Rd

É ÉléM La Mosaïque

Designated Catchment School
Grades PK to 6
80 Queensdale Ave

Collège français secondaire

Designated Catchment School
Grades 7 to 12
100 Carlton St

Other Local Schools

Kapapamahchakwew - Wandering Spirit School

Grades PK to 12
16 Phin Ave

Danforth Collegiate and Technical Institute

Grades 9 to 12
800 Greenwood Ave

Rosedale Heights School of the Arts

Grades 9 to 12
711 Bloor St E

PARKS & REC.

This home is located in park heaven, with 4 parks and a long list of recreation facilities within a 20 minute walk from this address.



Greenwood Park

150 Greenwood Ave



Monarch Park

115 Felstead Ave



The Rail Garden

450 Woodfield Rd



FACILITIES WITHIN A 20 MINUTE WALK

- | | |
|----------------|---------------------|
| 2 Pools | 2 Dog Parks |
| 3 Playgrounds | 2 Wading Pools |
| 1 Sports Field | 1 Basketball Court |
| 1 Splash Pad | 2 Ball Diamonds |
| 2 Rinks | 1 Trail |
| 1 Clubhouse | 2 Community Gardens |

TRANSIT

Public transit is at this home's doorstep for easy travel around the city. The nearest street transit stop is only a 3 minute walk away and the nearest rail transit stop is a 15 minute walk away.

Nearest Rail Transit Stop

Donlands Station



Nearest Street Level Transit Stop

Greenwood Ave At Ivy Ave



SAFETY

With safety facilities in the area, help is always close by. Facilities near this home include a fire station, a police station, and a hospital within 1.93km.

Toronto East Health Network - Michael Garron Hospital

825 Coxwell Ave

Fire Station

153 Chatham Ave

Police Station

101 Coxwell Ave



Disclaimer: These materials have been prepared for marianeves@chestnutpark.com and are not intended to solicit buyers or sellers currently under contract with a brokerage. By accessing this information you have agreed to our terms of service, which are hereby incorporated by reference. This information may contain errors and omissions. You are not permitted to rely on the contents of this information and must take steps to independently verify its contents with the appropriate authorities (school boards, governments etc.). As a recipient of this information, you agree not to hold us, our licensors or the owners of the information liable for any damages, howsoever caused.